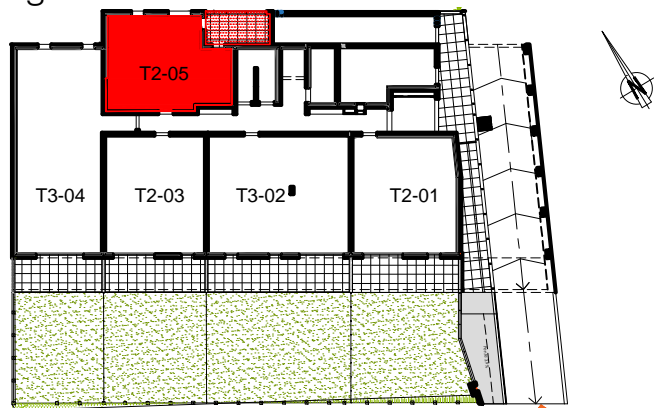


Repérage



T2 05 - TABLEAU DES SURFACES

SEJOUR/CUISINE	22,50 m ²
CH1	11,64 m ²
SDE	4,54 m ²
WC	1,36 m ²
Dgt / ENTREE	3,84 m ²
TOTAL	43,88 m²
LOGGIA:	9,12 m ²

